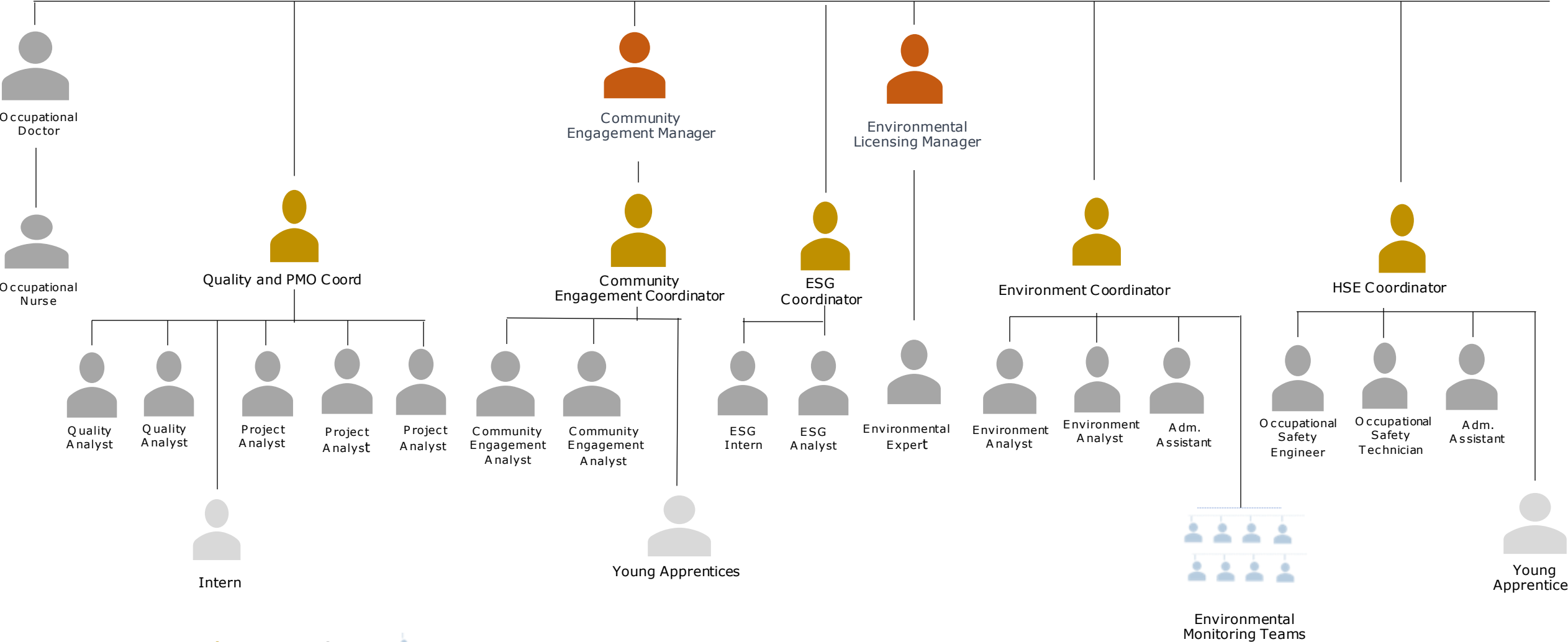


Port Development & ESG

Organizational chart



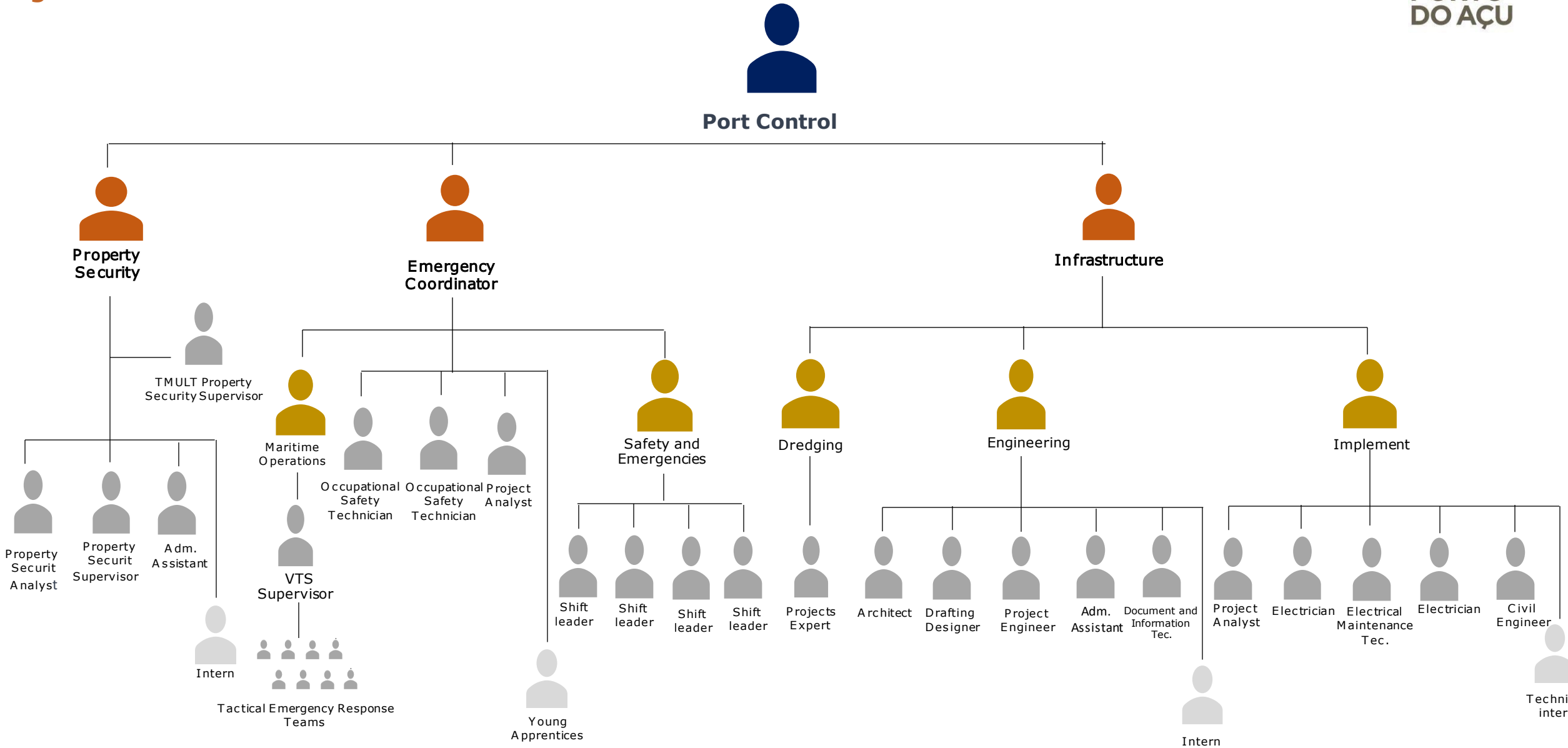
Port Development & ESG



NAME	FUNCTION	TRAINING
Fernanda Sossai	General Manager of Port Development & ESG	Occupational Safety and Environmental Engineer
Carolina Brandl	Environmental Licensing Manager	Oceanographer
Wanderson Sousa	Community Relations Manager	Biologist
Viviane Borges Campos	ESG Coordinator	Biologist
Luciola Marçal	Community Relations Coordinator	Social Service
Victor Sales	Quality and PMO Coordinator	Production Engineer
Jessica Medeiros	HSE Coordinator	Environmental and Sanitary Engineer
Tomaz Brentano	Environmental Expert	Environmental Engineer
TBD	ESG Analyst	
Marina Souza	ESG Intern	Student of Environmental Engineering
Betina Oliveira	Environment Coordinator	Environmental Engineer
Daniele Pereira	Environment Analyst	Environmental Engineer
Michelle Santos	Environment Analyst	Environmental and Sanitary Engineer
Clicia Pessanha	Adm. Assistant	Environmental Engineer
Bruno Esteves	Community Engagement Analyst	Biologist
Júlia Rabelo	Community Engagement Analyst	Internacionalist
Lara Gonçalves	Quality Analyst	Production Engineer
Sandro Nogueira	Quality Analyst	Administration
José Arthur	Intern	Student of Production Engineering
Bárbara Magliano	Occupational Doctor	Doctor
Fernanda Cardoso	Young Apprentices	Naval Construction Technician
Juçara Gomes	Occupational Nurse	Nurse
Diego Almeida	Project Management Expert	Production Engineer
Thiago Pereira	Project Analyst SR	Production Engineer
Yara Moore	Project Analyst PL	Civil Engineer
Letícia Cardoso	Project Analyst	Mechanical Engineer
Andreia Ramos	Adm. Assistant	Production Engineer
Fernanda Pessanha	Occupational Safety Engineer	Occupational Safety Engineer

Port Control

Organizational chart



NAME	FUNCTION	TRAINING
Gustavo Cruz	General Manager of Port Control	Production Engineer
João Chene	Property Security Manager	Business Administration
Leandro Alves	Property Security Supervisor	Enterprise Security Management
Maria Winnie	Property Security Analyst	Production Engineer
Robson Vieira	Property Security Supervisor	Accounting
Alcione Gama	Adm. Assistant	Technician of Administration
Lethycia Silva	Warehouse Assistant	Student of Production Engineering
André Fabrício	Core Manager	Oceanographer
Alexandre Gomes	Maritime Operations Coordinator	Naval Sciences
Renan Santos	Safety and Emergency Coordinator	
Paulo Tasaka	Occupational Safety Technician	Technology in Management Processes
Bruno Branco	Occupational Safety Technician	Occupational Safety Technician
Letícia Cardoso	Projects Analyst	Mechanical Engineer
Larissa Nunes	Young Apprentices	Technologist in Human Resources Management
Rodrigo Rangel	VTS Supervisor	Logistics
Andreia Santos	VTS Operator	Sociology
Mariana Trindade	VTS Operator	Production Engineer
Tauane Alves	VTS Operator	
Felipe Hilario	VTS Operator	Bachelor of Nautical Sciences
Mathues Almeida	VTS Operator	Bachelor of Nautical Sciences
Juliana Vianna	Core Assistant	Production Engineer
Artur Andrade	Shift Leader	Private Security
Mauricio Lopes	Shift Leader	Private Security
Nilmar Paixão	Shift Leader	Private Security
Estevão Viana	Shift Leader	Private Security

NAME	FUNCTION	TRAINING
Caio Cunha	Manager of Social Relations and Caruara Reserve	Law
Daniel Nascimento	Operational Coordinator and Technical Responsible	Forest Engineer
Priscila Pessanha	Community Engagement Coordinator	Social Services
Ana Concebida	Administrative Management Expert	Social Communication

Port Relations and Caruara Reserve

Organizational chart

